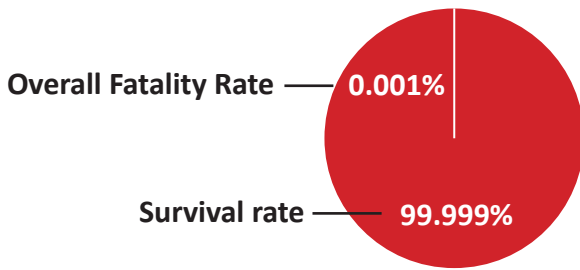


Covid Statistics Newfoundland & Labrador

Data was accessed on March 28, 2021



Deaths with Covid (Mortality Rate)



Fatality Rates = Based on 6 Deaths

Overall Fatality Rate = 0.001% (6/520,998)

Survival rate = 99.999% ((520,998-6)/520,998)

Case Fatality Rate = 0.59% (6/{1,016-4})

Infection Fatality Rate = Not Enough Data

<https://covid-19-newfoundland-and-labrador-gnl.hub.arcgis.com/>

<https://www150.statcan.gc.ca/t1/tbl1/en/tv.action?pid=1710000501>

Population

Population Total **520,998**

Total PCR test taken **218,755**

Total people tested **123,543**

Confirmed/Unconfirmed Cases **1,016**

<https://covid-19-newfoundland-and-labrador-gnl.hub.arcgis.com/>

<https://www150.statcan.gc.ca/t1/tbl1/en/tv.action?pid=1710000501>

Purported Cases with Covid

PCR Cycle Threshold **33**

<https://www.sciencedirect.com/science/article/pii/S138665322030175X>

Total confirmed PCR tests and probable, all time - **1,016**

%tested **23.71%** (123,543/520,998)

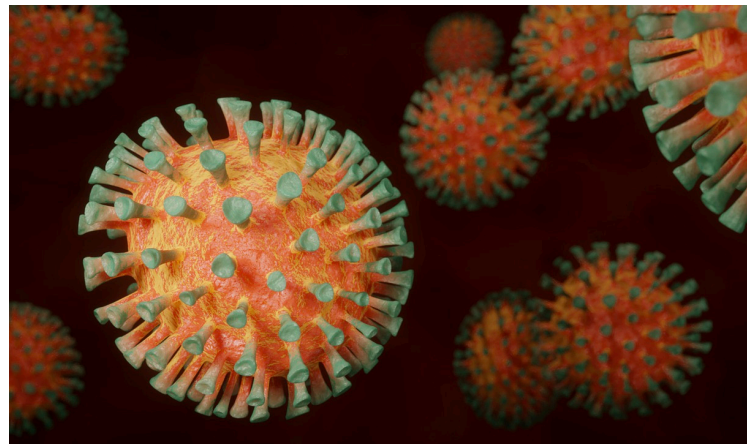
%positive **0.46%** (1,016/218,755)

%negative **99.54%** ((218,755-1,016)/218,755)

%unresolved/population total **0.0007%** (4/520,998)

<https://covid-19-newfoundland-and-labrador-gnl.hub.arcgis.com/>

Estimated total cases including antibody testing = **No Data Provided**



Hospitalizations with Covid

Patients in hospital **0** (includes those in ICU)

Patients in ICU **0**

<https://experience.arcgis.com/experience/8eeb9a2052d641c996dba5de8f25a8aa>

Deaths by Age

0-19 **0**

20-39 **0**

40-59 **0**

60-79 **6**

Over 80 **0**

Average age of deaths with Covid **No Data Provided**

Average provincial life expectancy **80**

<https://www150.statcan.gc.ca/t1/tbl1/en/tv.action?pid=1310011401>

Total Deaths Newfoundland & Labrador 2019 **5,244**

<https://www150.statcan.gc.ca/t1/tbl1/en/tv.action?pid=1310070801>

Definitions

Case Fatality Rate - considers deaths versus resolved cases. Calculate by taking total deaths divided by {total positive PCR tests and probable cases (minus current unresolved cases)}(tested and probable).

Infection Fatality Rate - total deaths/estimated total confirmed/unconfirmed.

Overall Fatality Rate - total deaths with Covid/Total population (also called Mortality Rate).

All information provided by Government of Newfoundland/Labrador/Statistics Canada/referenced sources - none of which has been verified by third party.