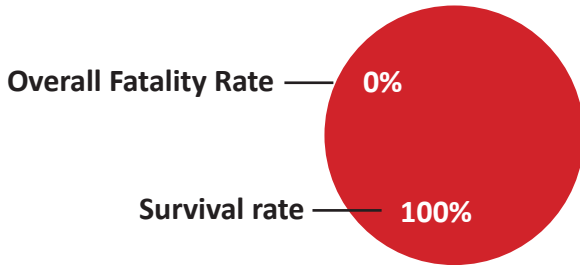


# Covid Statistics NWT

Data was accessed on March 18, 2021

## Deaths with Covid (Mortality Rate)



Fatality Rates Based on 0 Deaths

Overall Fatality Rate = 0% (0/45,161)

Survival rate = 100% ((45,161-0)/45,161)

Case Fatality Rate = 0% (0/{47-1})

Infection Fatality Rate = No Data Provided

<https://www.gov.nt.ca/covid-19/>

## Population

Population Total **45,161**

Total PCR test taken **15,438**

Total people tested **Data Not Provided**

Confirmed/Unconfirmed Cases **47**

<https://www150.statcan.gc.ca/t1/tbl1/en/https://www150.statcan.gc.ca/t1/tbl1/en/tv.action?pid=1710000901>

<https://www.gov.nt.ca/covid-19/>

## Purported Cases with Covid

PCR Cycle Threshold **No Data Provided**

Total confirmed PCR tests and probable, all time  
**47**

%tested **Data Not Provided**

%positive **0.30%** (47/15,438)

%negative **99.7%** ((15,438-47)/15,438)

%unresolved/population total **0.002%** (1/45,161)

<https://www.gov.nt.ca/covid-19/>

Estimated total cases including antibody testing =  
**No Data Provided**



## Hospitalizations with Covid

# Patients in hospital **0**

# Patients in ICU **0**

<https://www.gov.nt.ca/covid-19/>

## Deaths by Age

0-19 **0**

20-39 **0**

40-59 **0**

60-69 **0**

70-79 **0**

Over 80 **0**

Average age of deaths with Covid **Not Applicable**

<https://www.gov.nt.ca/covid-19/>

Average provincial life expectancy **77.4**

<https://www150.statcan.gc.ca/t1/tbl1/en/tv.action?pid=1310011401>

Total Deaths NWT 2019 **225**

<https://www150.statcan.gc.ca/t1/tbl1/en/tv.action?pid=1310070801>

### Definitions

**Case Fatality Rate** - considers deaths versus resolved cases. Calculate by taking total deaths divided by {total positive PCR tests and probable cases (minus current unresolved cases)}(tested and probable).

**Infection Fatality Rate** - total deaths/estimated total confirmed/unconfirmed.

**Overall Fatality Rate** - total deaths with Covid/Total population (also called Mortality Rate).

*All information provided by Government of NWT/Statistics Canada/referenced sources - none of which has been verified by third party.*