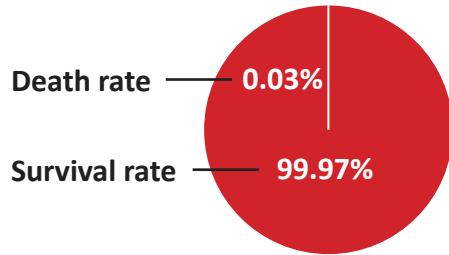


Covid Statistics BC

Data was accessed on April 6, 2021

Deaths with Covid (Mortality Rate)



Fatality Rates = based on 1,489 Deaths (as of April 6, 2021)
Overall Fatality Rate = 0.03% (1,489/5,145,851)
Survival Rate = 99.97% $\{(5,145,851-1,489)/5,145,851\}$
Case Fatality Rate = 1.53% (1,489/{105,988-8,671})
Infection Fatality Rate = 0.19% (1,489/{847,904-69,368})
<https://experience.arcgis.com/experience/a6f23959a8b14bfa989e3cda29297ded>

Population

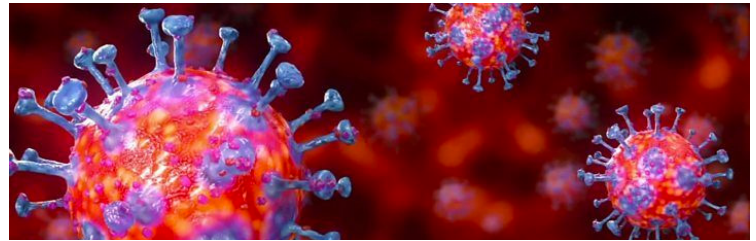
Population total **5,145,851**
Total PCR tests taken **2,255,080**
Total people tested **unknown**
<https://experience.arcgis.com/experience/a6f23959a8b14bfa989e3cda29297ded>
<https://www150.statcan.gc.ca/t1/tbl1/en/tv.action?pid=1710000901>

Purported Cases with Covid

PCR Cycle Threshold **35-40**
<https://www.sciencedirect.com/science/article/pii/S138665322030175X>
Total PCR tests and probable, all time **105,988**
Unresolved cases **8,671**
% tested **Unknown**
% positive **4.70%** (105,988/2,255,080)
% negative **95.3%** $\{(2,255,080-105,988)/2,255,080\}$
% active cases/pop. total **0.17%** (8,671/5,145,851)

Estimated total cases including antibody testing
847,904 (105,988* 8)

<https://experience.arcgis.com/experience/a6f23959a8b14bfa989e3cda29297ded>
<https://www150.statcan.gc.ca/t1/tbl1/en/tv.action?pid=1710000901>
<https://www.medrxiv.org/content/10.1101/2020.07.13.20153148v1>



Hospitalizations with Covid

Patients in hospital **328** (includes those in ICU)

Patients in ICU **96**

Deaths by Age (as of March 20, 2021)

(BC deaths by age not available in real time)

0-19	0
20-39	11
40-59	63
60-69	119
70-79	288
Over 80	957

<https://experience.arcgis.com/experience/a6f23959a8b14bfa989e3cda29297ded>

<http://www.bccdc.ca/health-info/diseases-conditions/covid-19/data#Situationreport>

Median age of deaths with Covid **85**

Average provincial life expectancy **82**

Statistics Canada. Table 13-10-0114-01 Life expectancy and other elements of the life table, Canada, all provinces except Prince Edward Island

Total Deaths British Columbia 2019 **38,551**

<https://www150.statcan.gc.ca/t1/tbl1/en/tv.action?pid=1310070801>

Definitions

Case Fatality Rate - considers deaths versus resolved cases. Calculate by taking total deaths divided by {total positive PCR tests and probable cases (minus current unresolved cases)}(tested and probable).

Infection Fatality Rate - total deaths/estimated total confirmed/unconfirmed.

Overall Fatality Rate - Total deaths with Covid/Total population (also called Mortality Rate).

All information provided by Government of BC/Statistics Canada/referenced sources - none of which has been verified by third party.